

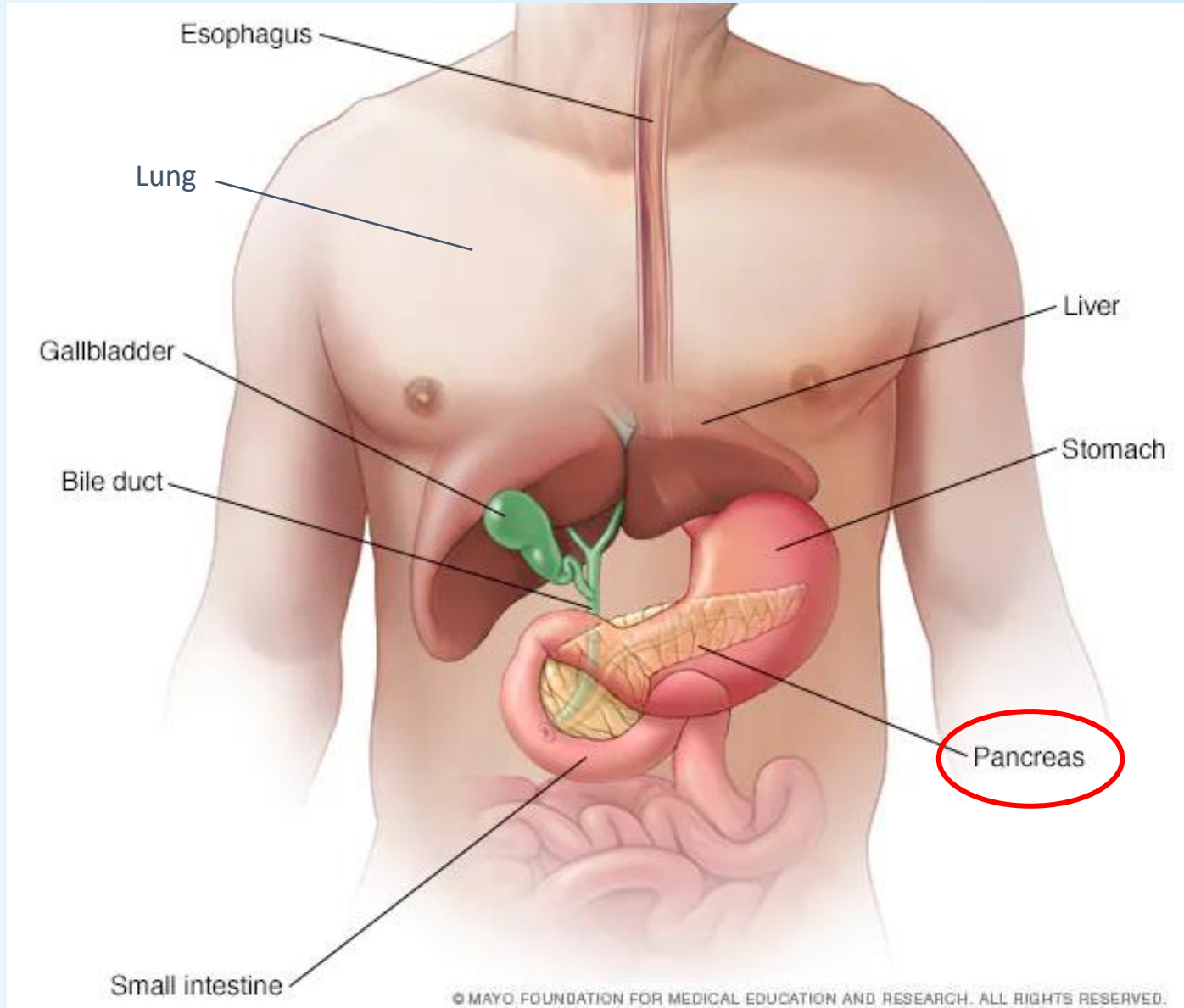
The Neglected Heavy Burden: Pancreatic Cancer

Prof. Patrick Michl, MD
University of Heidelberg, Germany

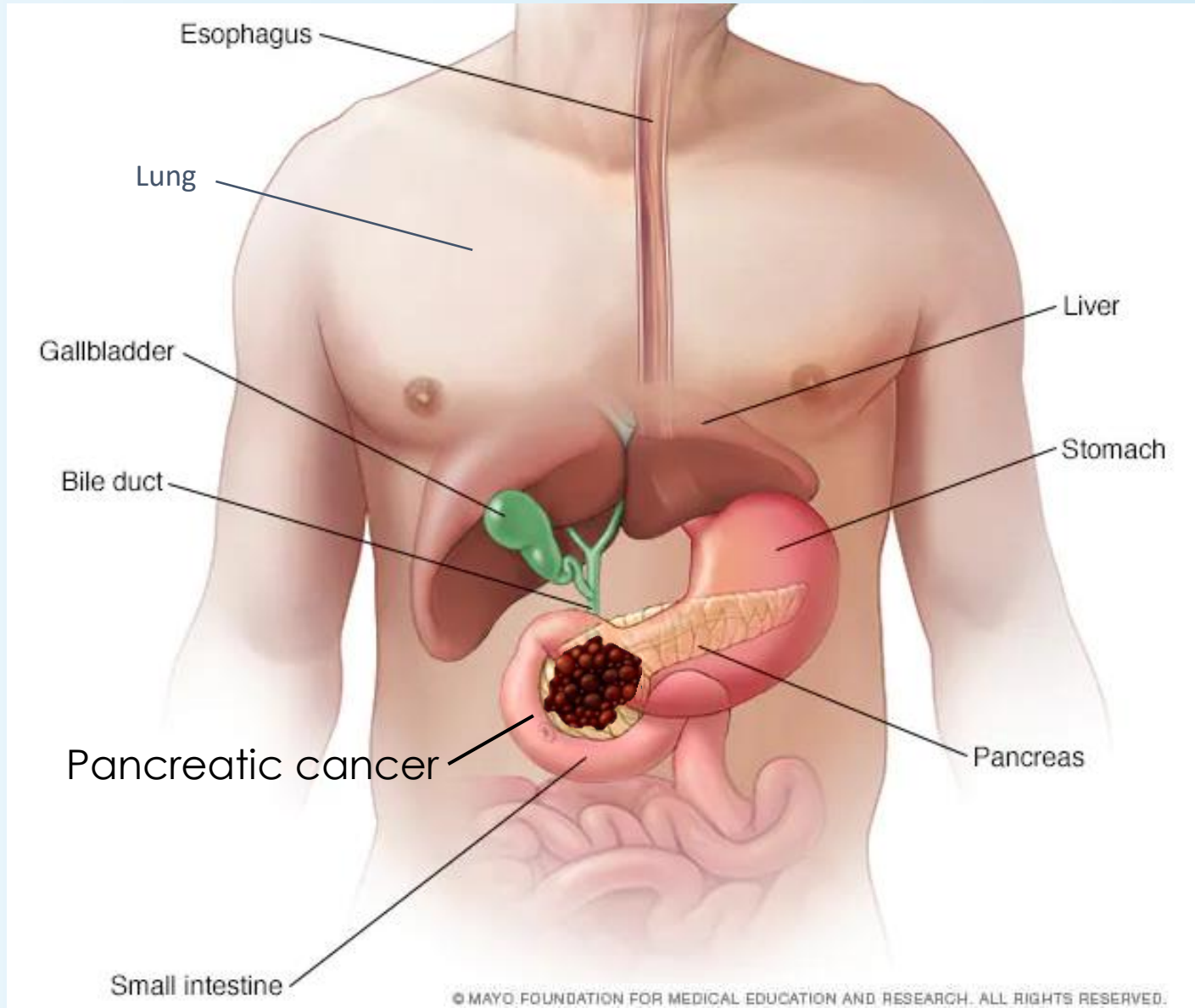
15 November 2022
13H - 15:00 CET
European Parliament



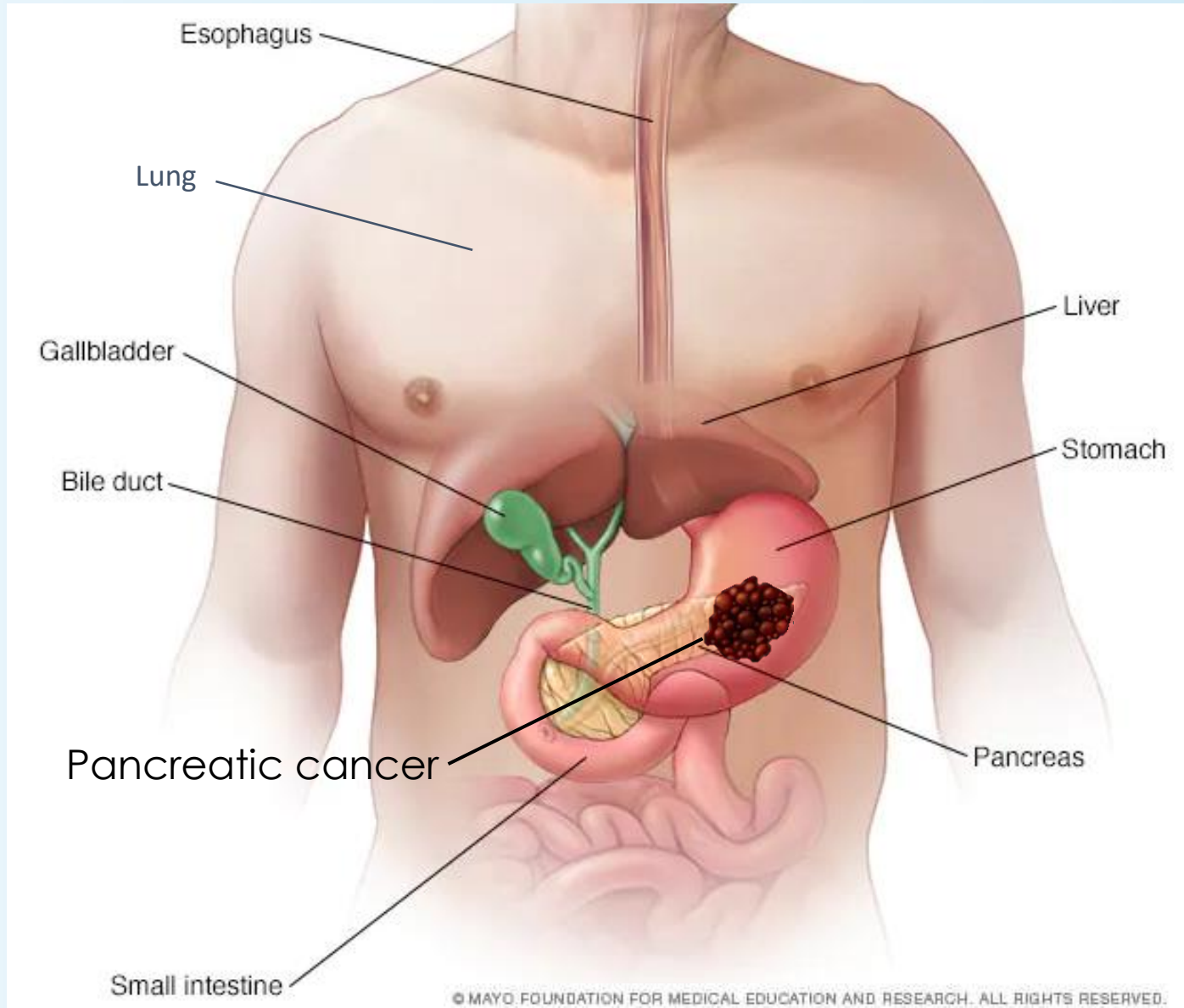
The pancreas: Where is it?



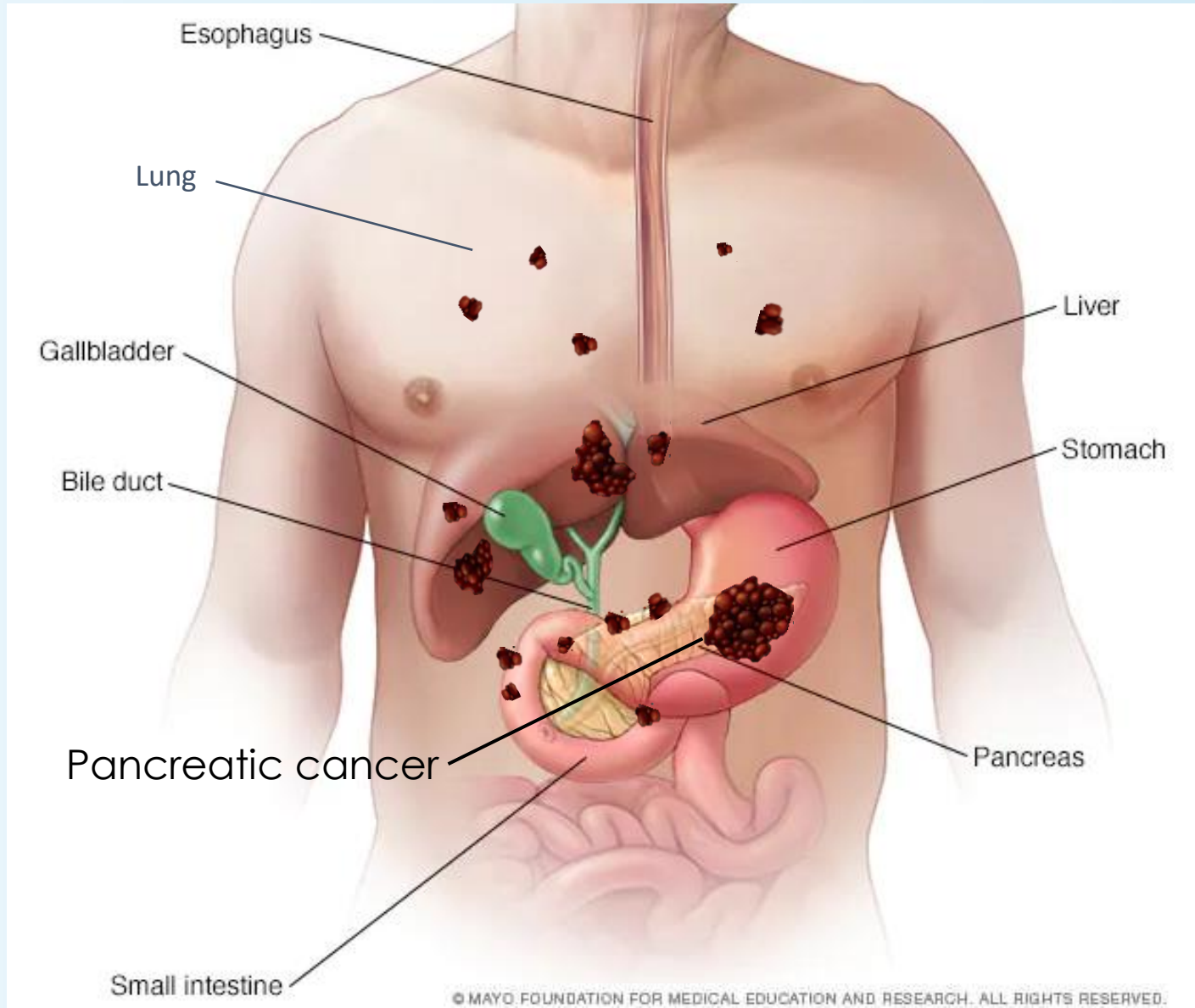
Pancreatic cancer: Where is its origin?



Pancreatic cancer: Where is its origin?

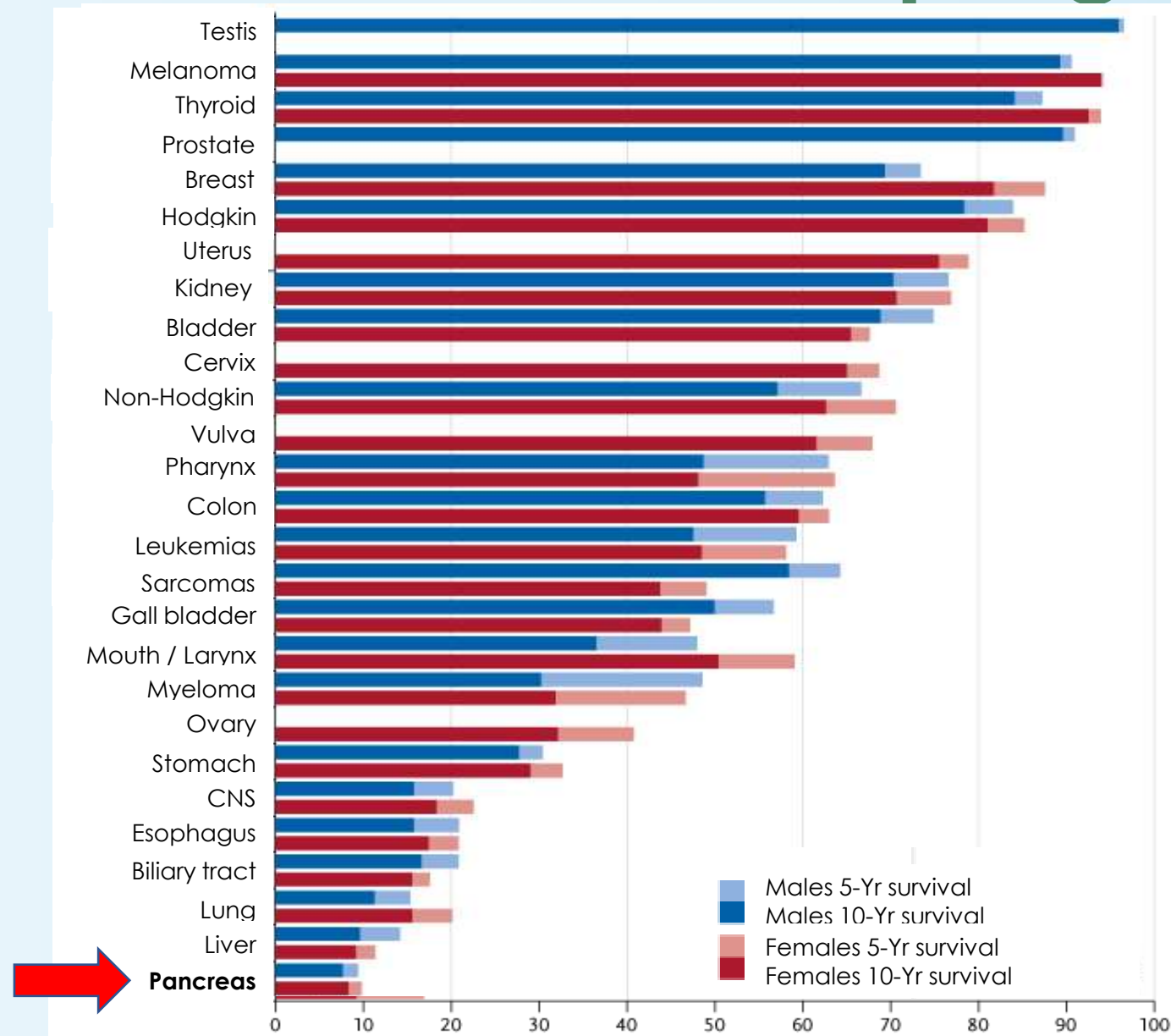


Pancreatic cancer: Where does it spread?



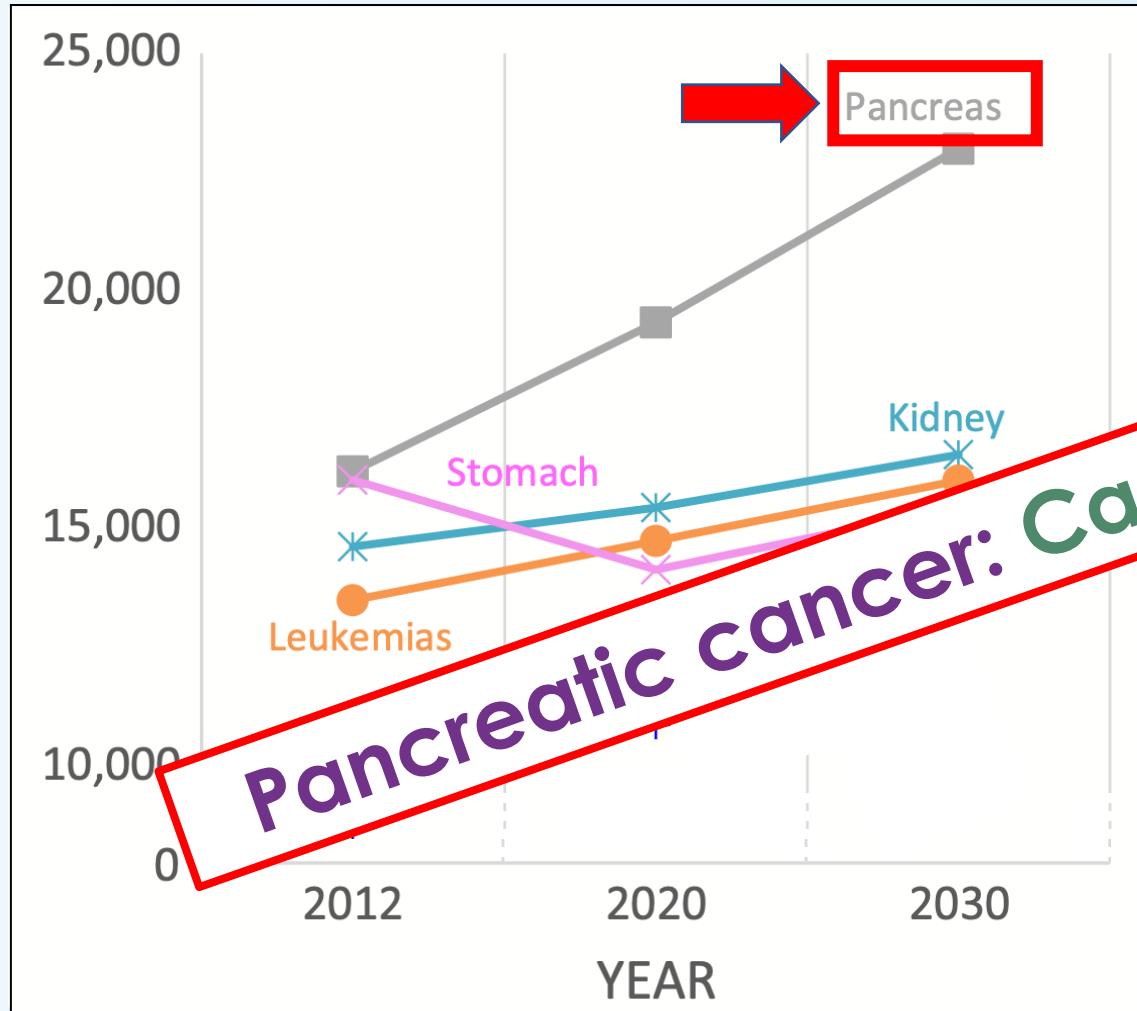
Pancreatic cancer: Dismal prognosis

Long-term survival (%) across tumor types

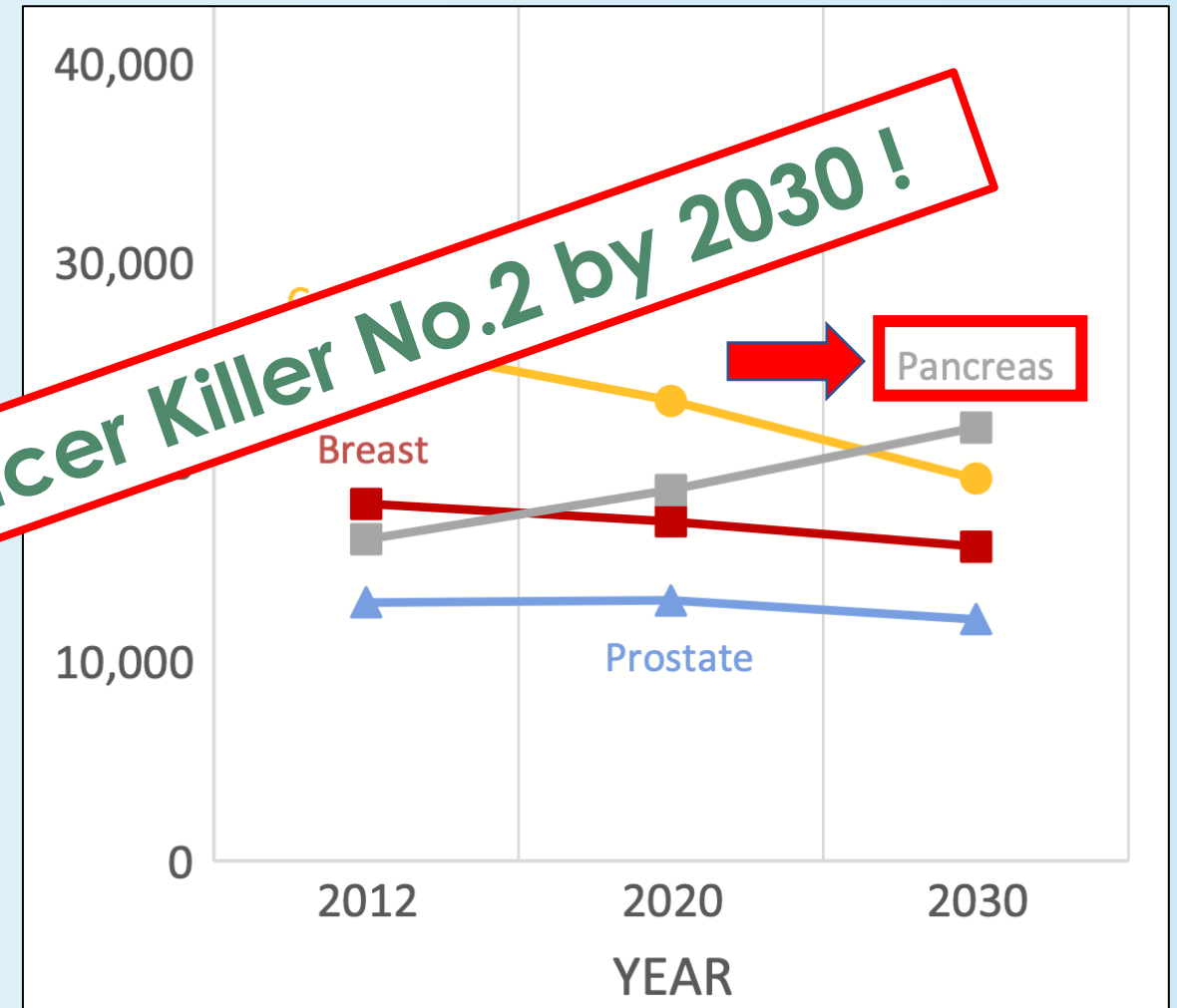


Pancreatic cancer: Increasing burden

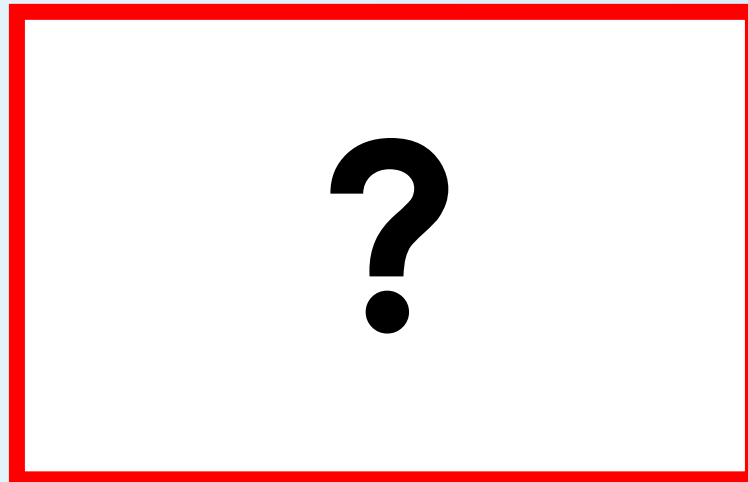
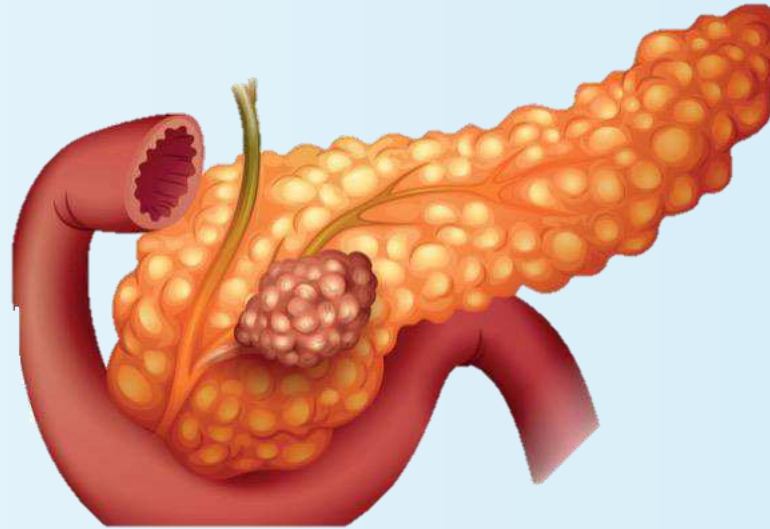
Incidence



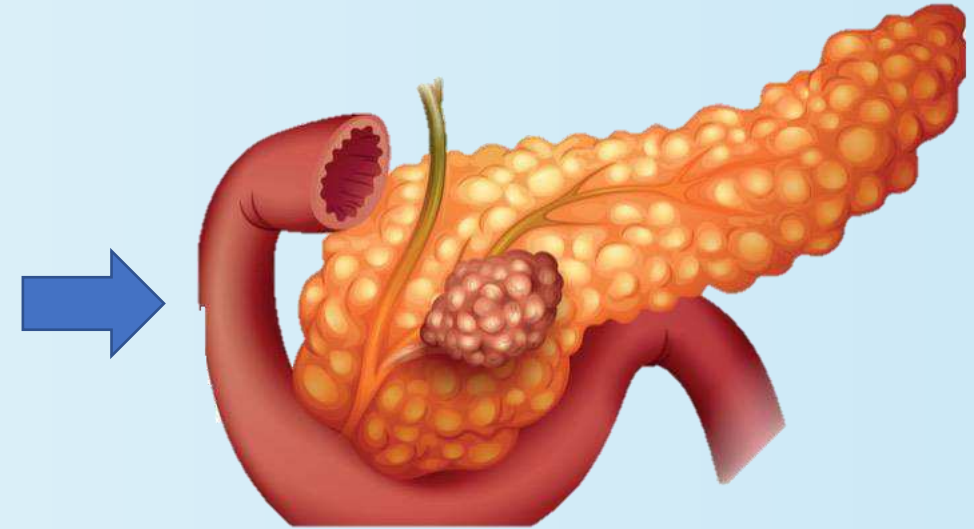
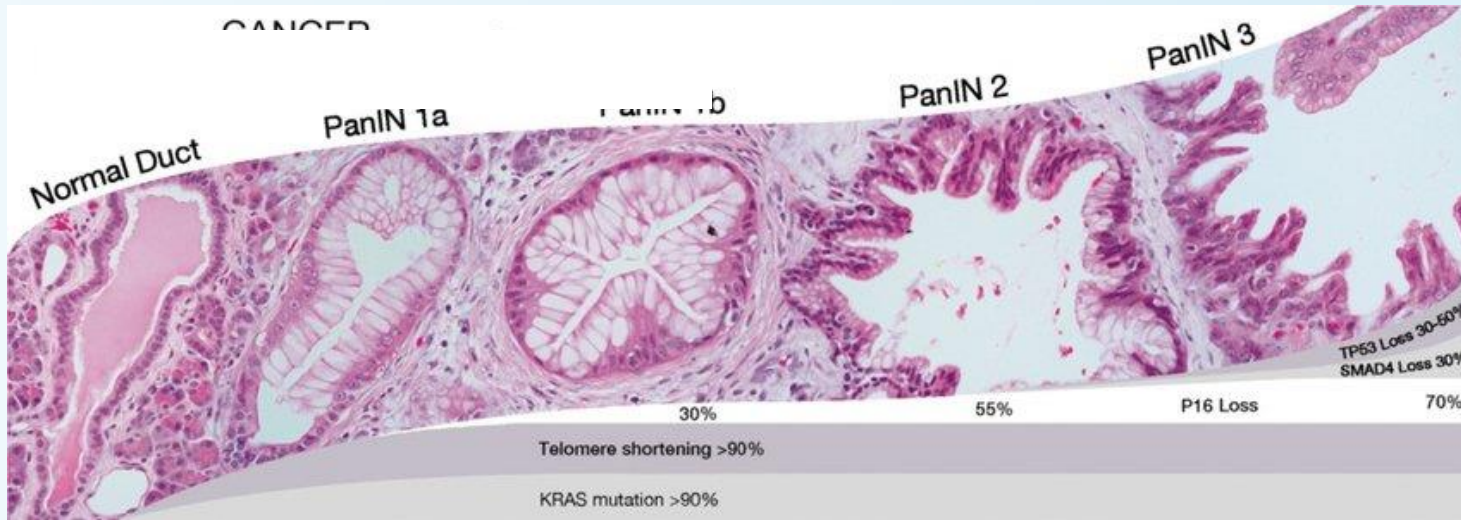
Cancer-related deaths



Pancreatic cancer: Risk factors not well understood



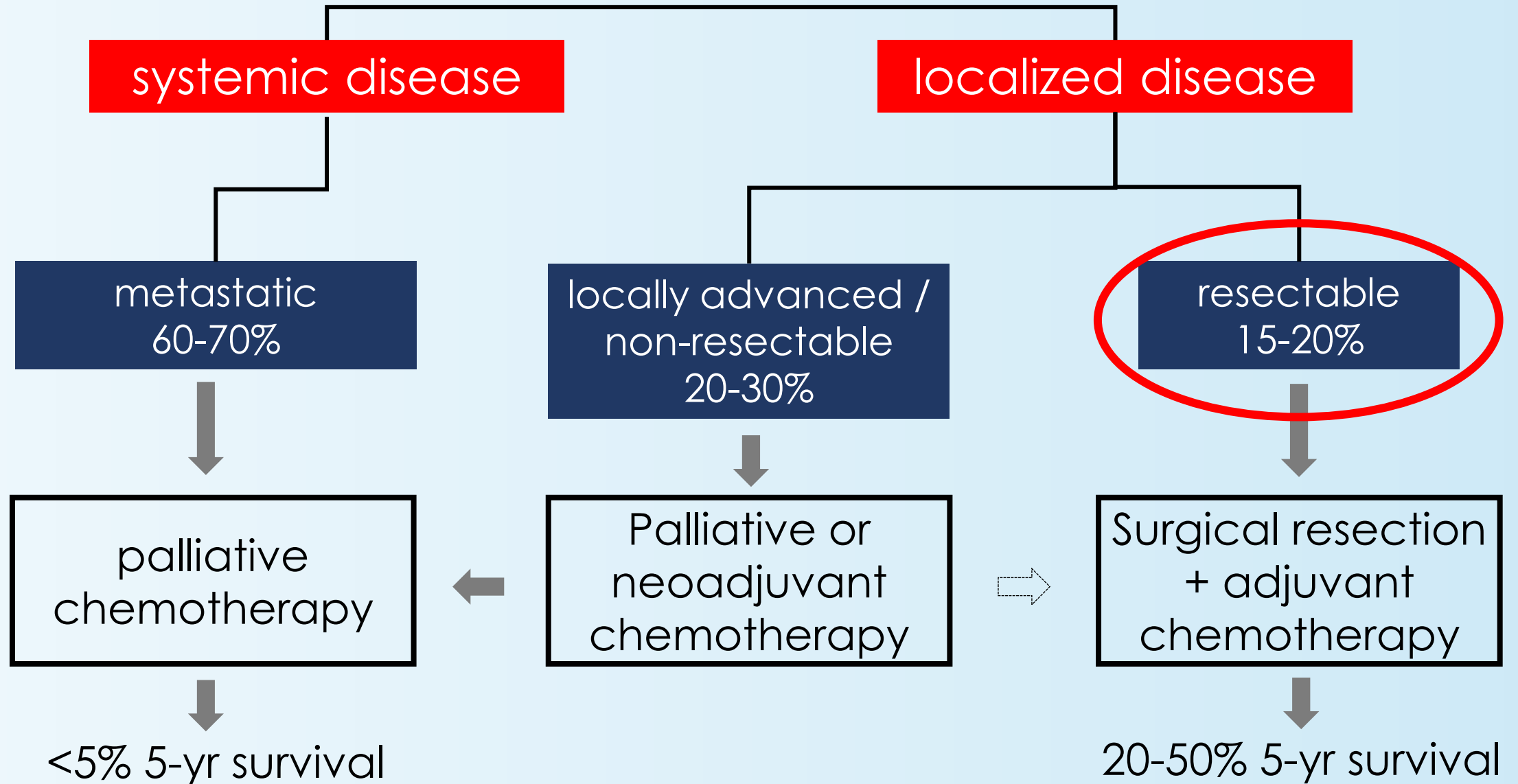
Pancreatic cancer: Screening is not feasible



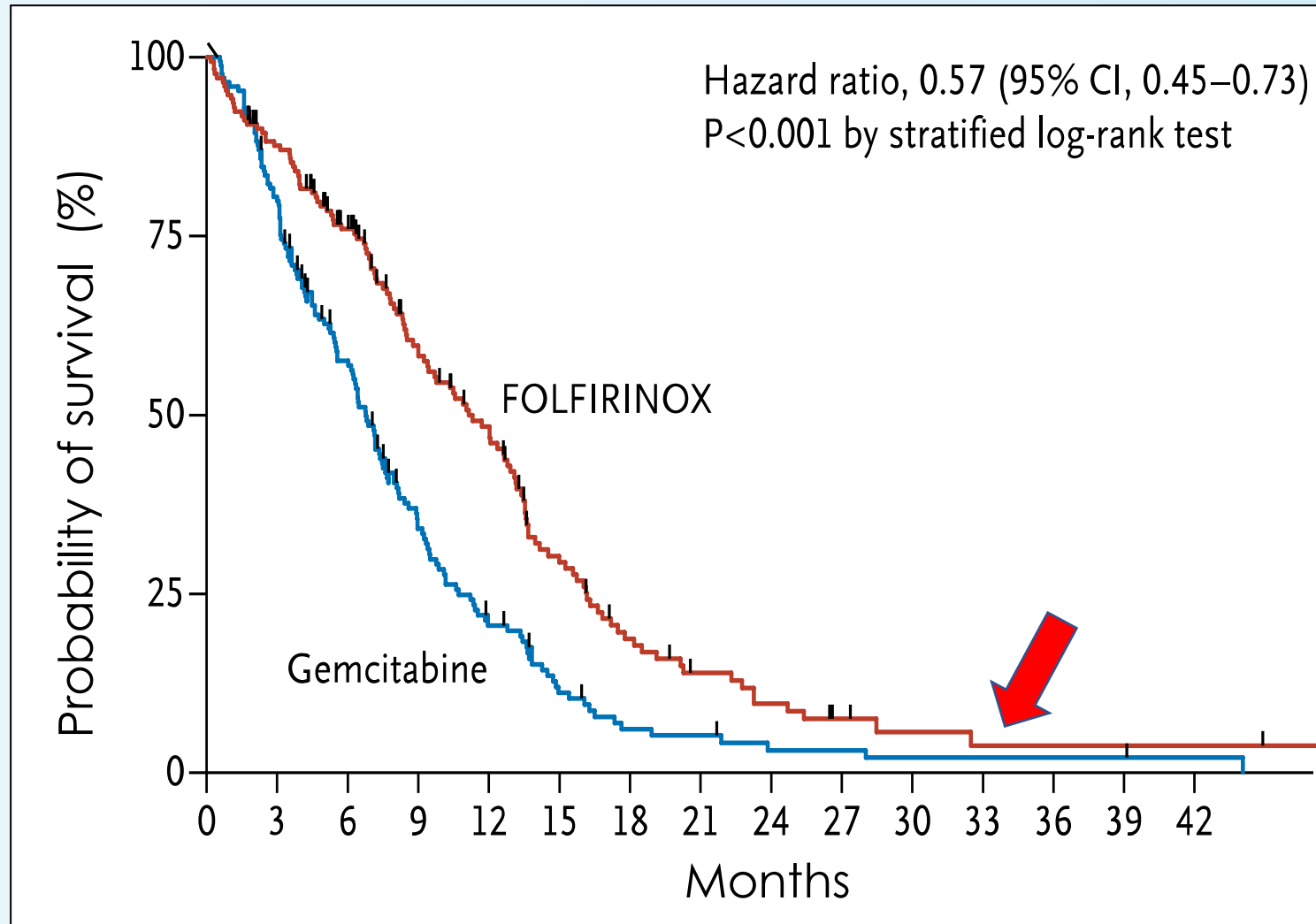
Most pancreatic cancers develop via microscopic precursor lesions

No robust imaging tools or biomarkers exist to detect these lesions reliably to allow screening

Pancreatic cancer: Diagnosed too late



Pancreatic cancer: Current systemic (chemo)therapy options are insufficient



Pancreatic cancer: Targeted therapy options are challenging

Genetic diversity

Complex stroma reaction

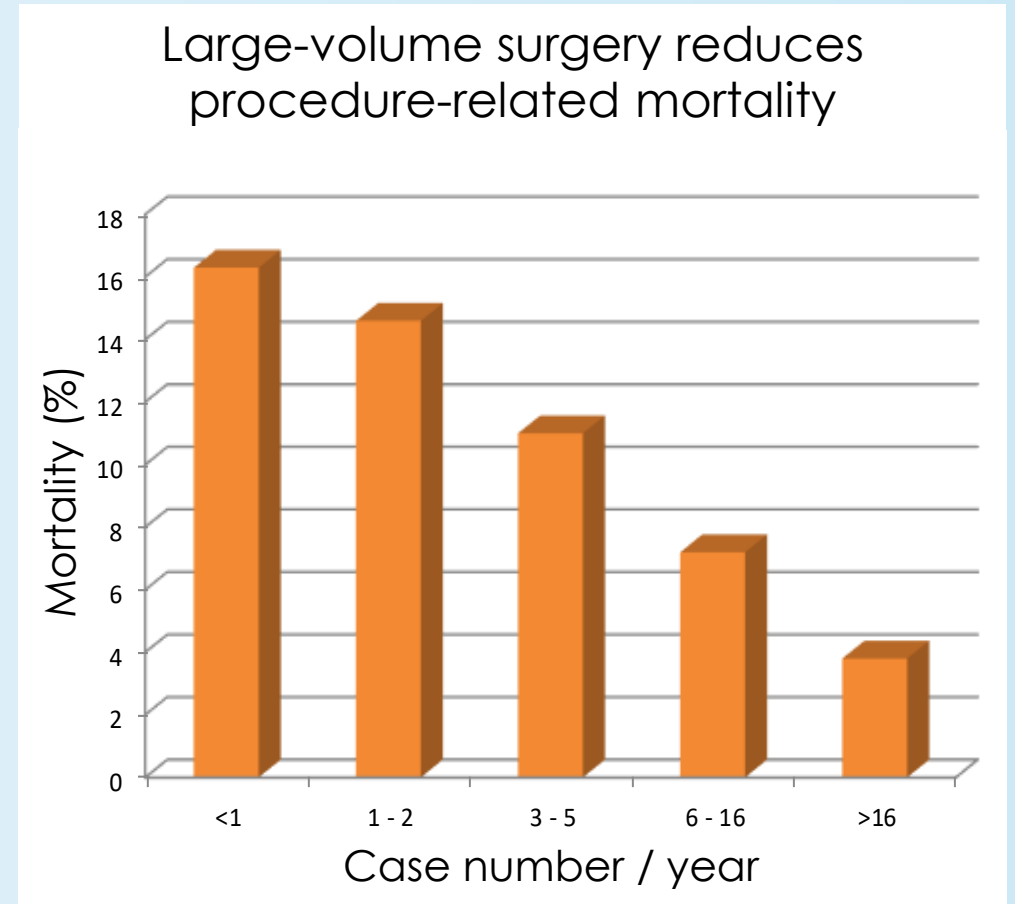
Immune evasion



Pancreatic cancer: Health care disparities across Europe

No equal access to large-volume centers across Europe

No equal access to all systemic (chemo)therapy regimens



Pancreatic cancer: What we need



Enhance our understanding of this complex disease through Pan-European research efforts



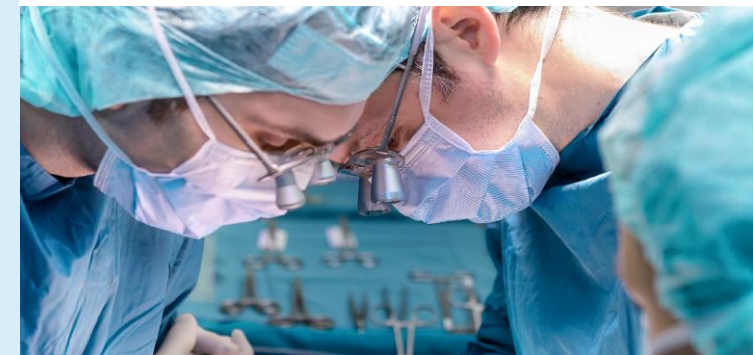
Identify innovative tools for screening and earlier diagnosis



Develop new personalized strategies to overcome therapy resistance



Improve access to high-level care across Europe, include patients' perspectives





Contact

Prof. Dr. Patrick Michl
University Hospital Heidelberg
Dept. of Internal Medicine IV
69120 Heidelberg, Germany
patrick.michl@med.uni-heidelberg.de

